

# **DAILY RESEARCH, 3 AGUSTUS 2020**

**PT PROFINDO SEKURITAS INDONESIA**

**GD PERMATA KUNINGAN LT 19  
JL KUNINGAN MULIA KAV 9C GUNTUR SETIABUDI JAKARTA SELATAN 12980**

**TELP +62 21 8378 0888**

**EMAIL : CUSTOMERSERVICE@PROFINDO.COM**

**WWW.PROFINDO.COM | PROCLICK.PROFINDO.COM**

# MARKET MOVERS



Bursa saham AS ditutup menguat setelah didorong kenaikan saham sector Teknologi seperti Apple, Amazon, Facebook setelah rilis kinerja Triwulanan yang memuaskan. **DOW +0.44%, S&P +0.77%, NASDAQ +1.49%**

Bursa saham Eropa ditutup melemah setelah rilis data pertumbuhan ekonomi Zona Eropa minus 11.9%. **Indeks DAX -0.54%, FTSE -1.54%, CAC -1.43%**

Bursa Saham Asia dibuka mayoritas melemah setelah lonjakan kasus covid 19 di AS diperkirakan akan menghambat pemulihan ekonomi global. **Hang Seng -0.47%, KOSPI -0.38%, Nikkei +1.64%**

Harga minyak mentah dunia melemah setelah semakin meningkatnya kasus covid 19 di AS. Harga emas ditutup menguat setelah kasus covid 19 yang terus meningkat membuat pelaku pasar mengalihkan asset mereka ke instrumen safe heaven. **WTI -0.67%, Brent Oil -0.78%, Gold +0.36%.**

IHSG pada perdagangan hari ini diperkirakan akan **BULLISH** dengan Range pergerakan **5091-5278** dengan saham-saham yang dapat diperhatikan : **TLKM BBRI PGAS WIIM TOWR INAF**

# MARET DATA

## AMERIKA

DOW 30	26,428.32	+114.67	+0.44%
S&P 500	3,271.12	+24.90	+0.77%
NASDAQ	10,745.28	+157.46	+1.49%

## EUROPE

DAX	12,313.36	-66.29	-0.54%
FTSE 100	5,897.76	-92.23	-1.54%
CAC 40	4,783.69	-69.25	-1.43%

## ASIA

SHANGHAI	3,309.95	-0.05	-0.71%
HANGSENG	24,595.35	-115.24	-0.47%
SET	1,328.53	+12.79	+0.97%
KOSPI	2,240.88	-8.49	-0.38%
JCI	5,149.63	+38.51	+0.75%
NIKKEI	22,065.00	+355.00	+1.64%
ASX	5,895.30	-32.50	-0.55%

## COMMODITIES

GOLD	1,980.95	+7.05	+0.36%
WTI OIL	40.00	-0.27	-0.67%
BRENT OIL	43.30	-0.34	-0.78%
COAL	62.45	+0	+0%
PALM OIL	2780	+50	+1.83%
TINS	17,902.50	0.00	0.00%
NICKEL	13,692.50	-70.00	-0.51%

# EVENT & ECONOMIC CALENDER

## ECONOMIC CALENDER :

### INDONESIA

30820	MARKIT PMI MANUFACTURING (JUL) INFLATION RATE (MoM) JUL TOURIST ARRIVAL (YoY) JUN
50820	LOAN GROWTH (YoY) JUN GDP GROWTH (YoY) JUL BUSSINES CONFIDENCES Q2
60820	CONSUMER CONFIDENCE (JUL)

### GLOBAL

030820	JPN GDP Q1 (QoQ) GERMAN MARKIT PMI MANUFACTURING (JUL) BRITISH MARKIT PMI MANUFACTURING (JUL) FRANCE MARKIT PMI MANUFACTURING (JUL) EUROPE MARKIT PMI MANUFACTURING (JUL) US MARKIT PMI MANUFACTURING (JUL)
040820	KOREA INFLATION RATE (MoM) JUL JAPAN CORE CPI (JUL) AUSTRALIA TRADE BALANCE (JUN) AUSTRALIA RETAIL SALES (JUN) EUROPE PPI (MoM) JUN
050820	US API CRUDE OIL STOCK CHANGE HONG KONG MARKIT PMI (JUL) EUROPE RETAIL SALES (MoM) JUN BANK OF JAPAN GOV KURODA SPECH US TRADE BALANCE (JUN)
060820	KOREA CURRENT ACCOUNT (JUN) BANK OF ENGLAND INTEREST RATE DECISION BANK OF ENGLAND QUANTITATIVE EASING US INITIAL JOBLESS CLAIMS
070820	CHINA TRADE BALANCE (JUL) GERMAN TRADE BALANCE (JUN) FRANCE TRADE BALANCE (JUN) US NONFARM PAYROLS (JUL)

## CORPORATE ACTION :

### DEVIDEN

040820	UNVR RP 107 (CUM 0408, PAYMENT 1908) SMSM RP 19 (CUM 0408, PAYMENT 2508) AKRA RP 50 (CUM 0408, PAYMENT 1308)
050820	PGLI RP 1 (CUM 0508, PAYMENT 2608) ABDA RP 60 (CUM 0508, PAYMENT 2608)
060820	XCID RP 0.7984 (CUM 060820, PAYMENT 2408) SRSN RP 2 (CUM 0608, PAYMENT 2808) INTP RP 500 (CUM 0608, PAYMENT 2808)

### RUPS

30820	TOTO INDX BLUE APII
040820	WTON KIOS IPCC
050820	TPIA SMBR PURA PGJO MTPS INDO FPRZ DFAM DEAL CLAY BCIP APEX ANDI ACES
060820	RUIS MTLA BRPT BAPA AMFG
070920	SINI RODA RMBA REAL PEGE PANI MLIA LPGI BSMR AMAN

### IPO

### RIGTH ISSUE

# JAKARTA COMPOSITE INDEX



## PREVIOUS 30 JULI 2020

CLOSING	5149.627	+0.754%
TRANSACTION	IDR 9.428 TRILLION	
FOREIGN NETT	IDR 49.58 BIO (BUY)	

## PREDICTION 3 AGUSTUS 2020

**BULLISH**  
**RANGE 5091-5278**

MORNING STAR  
STOCHASTIC : GOLDEN CROSS  
MACD : HISTOGRAM NEGATIF MENGECIL DAN BERSIAP  
GOLDEN CROSS

# TECHNICAL RECOMENDATION



**TLKM – PT TELEKOMUNIKASI INDONESIA  
(PERSERO) TBK**

**CLOSING 30/7/2020 RP 3050 (+1.7%)**

**BUY**

**TARGET PRICE 3250**

**STOPLOSS < 3000**

**BREAK OUT FALLING WEDGE**

**STOCHASTIC : GOLDEN CROSS**

**MACD : HISTOGRAM NEGATIF MENGECIL DAN  
BERSIAP GOLDEN CROSS**

# TECHNICAL RECOMENDATION



**PGAS – PT PERUSAHAAN GAS NEGARA TBK**

**CLOSING 30/7/2020 RP 1265 (+2.8%)**

**BUY**

**TARGET PRICE 1465**

**STOPLOSS < 1230**

**BREAK OUT RISING WEDGE**

**STOCHASTIC : GOLDEN CROSS**

**MACD : HISTOGRAM POSITIF DAN UPTREND**

# TECHNICAL RECOMENDATION



**BBRI – PT BANK RAKYAT INDONESIA (PERSERO)  
TBK**

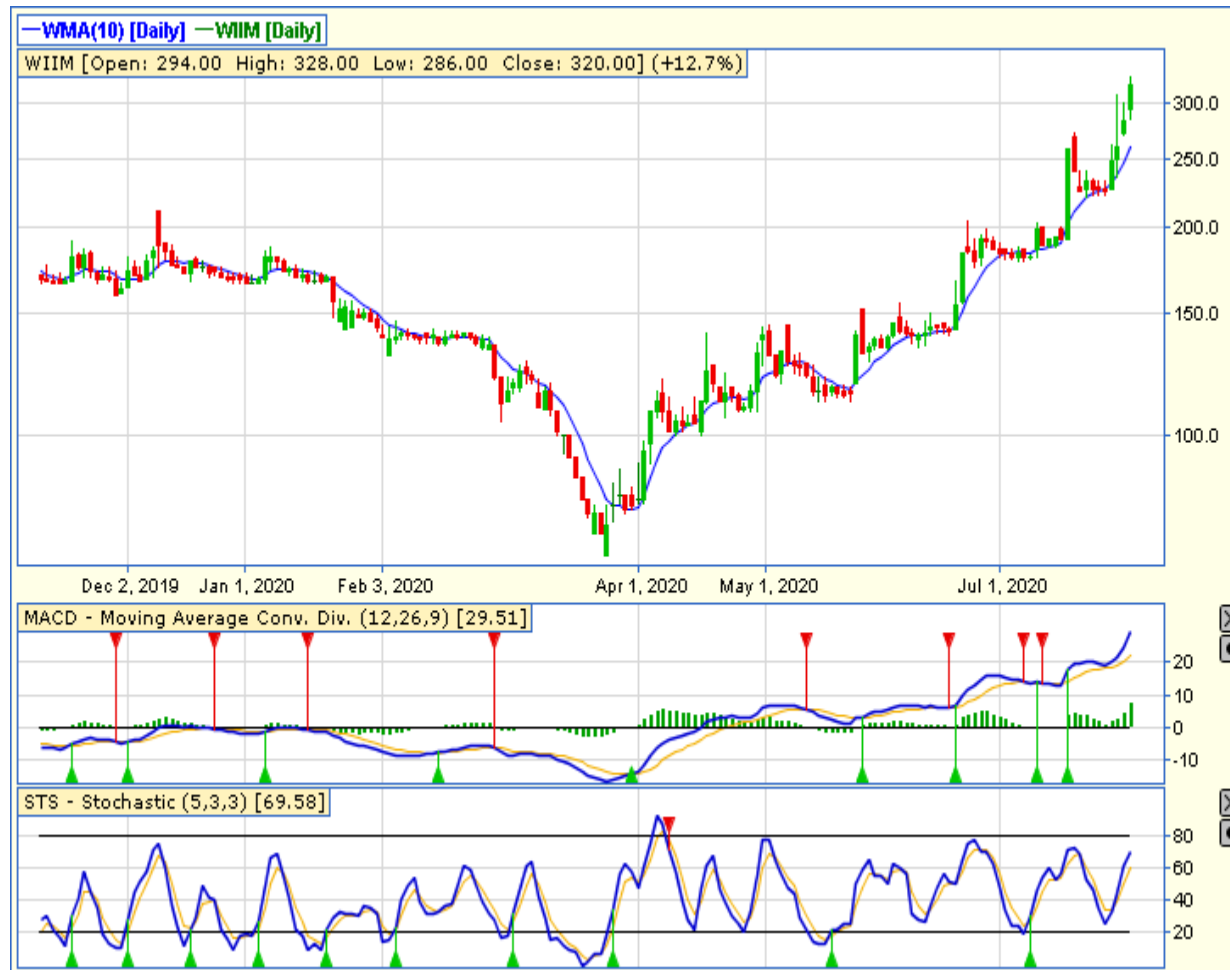
**CLOSING 30/7/2020 RP 3160 (+1.3%)**

**BUY  
TARGET PRICE 3270  
STOPLOSS < 3110**

**BREAK OUT TRIANGLE  
STOCHASTIC : UPTREND  
MACD : HISTOGRAM NEGATIF MENGECIL DAN  
BERSIAP GOLDEN CROSS**



# TECHNICAL RECOMENDATION



**WIIM – PT WISMILAK INTI MAKMUR TBK**

CLOSING 230/7/2020 Rp 320 (+12.7%)

**BUY**

**TARGET PRICE 444**

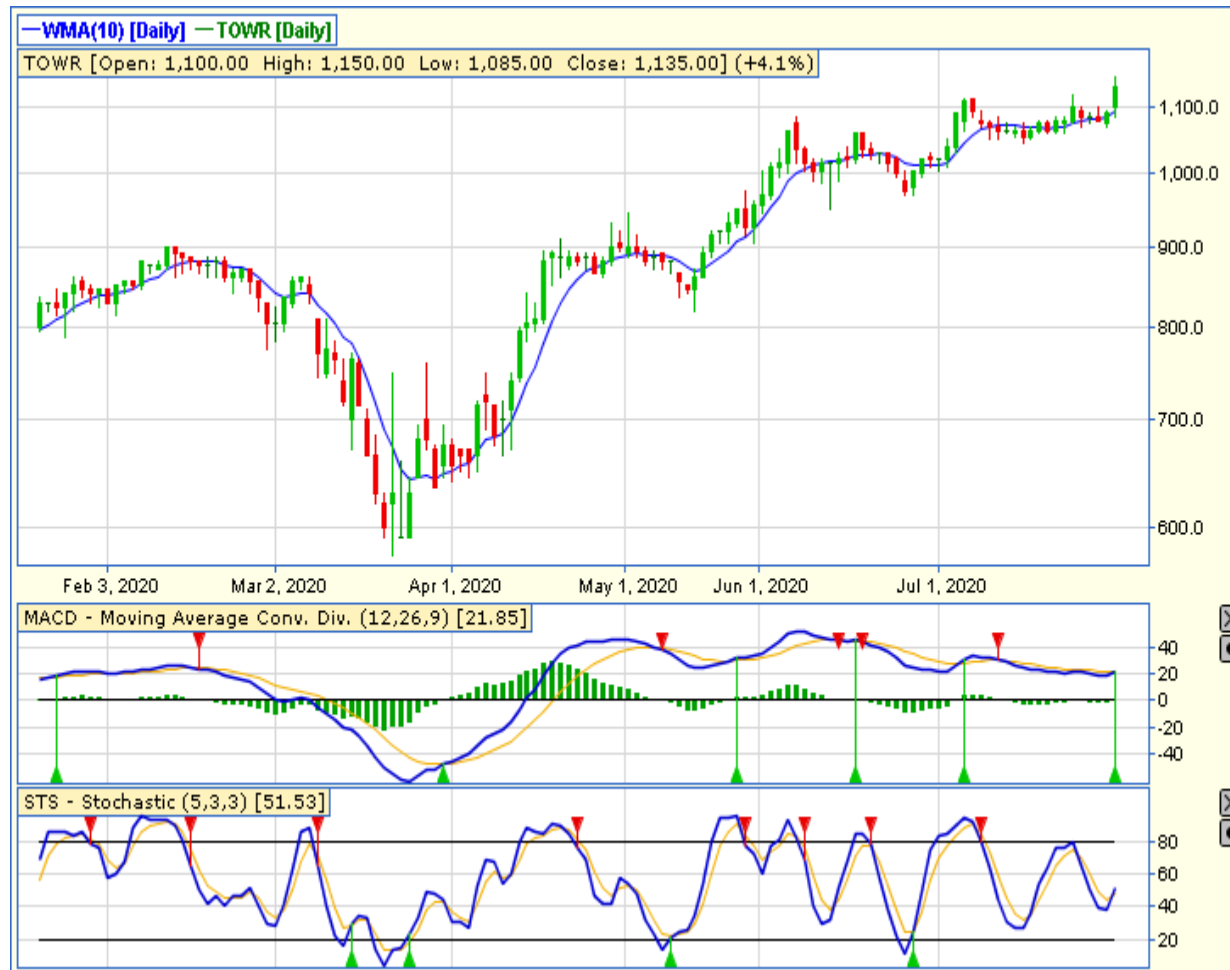
**STOPLOSS < 286**

BREAK OUT RISING WEDGE

STOCHASTIC : UPTREND

MACD : HISTOGRAM POSITIF DAN UPTREND

# TECHNICAL RECOMENDATION



**TOWR – PT SARANA MENARA NUSANTARA TBK**

**CLOSING 30/7/2020 RP 1135 (+4.1%)**

**BUY**

**TARGET PRICE 1375**

**STOPLOSS < 1085**

**BREAK OUT TRIANGLE**

**STOCHASTIC : GOLDEN CROSS**

**MACD : HISTOGRAM POSITIF DAN GOLDEN CROSS**

# TECHNICAL RECOMENDATION



**INAF – PT INDOFARMA TBK**

**CLOSING 30/7/2020 RP 2280 (+8.1%)**

**SELL ON STRENGTH  
TAKE PROFIT 2500**

**INVERTED HAMMER  
STOCHASTIC : OVERSOLD  
MACD : HISTOGRAM POSITIF DAN UPTREND**

# RESEARCH TEAM



**YULIANA**

**RESEARCH ANALYST &  
CORPORATE FINANCE**



**DIMAS WP PRATAMA, CSA**

**TECHNICAL ANALYST**

# EQUITY CAPITAL MARKET TEAM



**JESSIE JAMES**

**HEAD OF EQUITY SALES**



**PRASETYO NUGROHO**

**HEAD OF DEALING ROOM**



**GABRIELLA PRATIWY**

**HEAD OF ONLINE TRADING**